

Oracle FLEXCUBE OBIEE Reports  
Oracle FLEXCUBE Universal Banking  
Release 12.2.0.0.0  
[May] [2016]



---

# Table of Contents

- 1. FLEXCUBE OBIEE REPORTS SETTING..... 1-2**
- 1.1 INTRODUCTION ..... 1-2
- 1.2 CREATION OF USER WITH ADMINISTRATOR RIGHTS ..... 1-2
  - 1.2.1 *Steps to create user* ..... 1-2
- 1.3 STEPS TO IMPLEMENT ACCESS RESTRICTIONS TO USER ..... 1-7
- 1.4 UPDATE THE USER ID IN CSTB\_PARAM ..... 1-13
- 1.5 INTEGRATION OF OBIEE INTO FLEXCUBE USING IFRAME ..... 1-13
- 1.6 WRITEBACK XML DEPLOYMENT ..... 1-14
- 1.7 SERVER FILE CHANGES ..... 1-15
- 1.8 CREATION AND MAINTENANCE OF BPEL URL..... 1-16
  - 1.8.1 *Steps for creation of BPEL url.* ..... 1-16
  - 1.8.2 *Steps for Maintenance of BPEL url.* ..... 1-18
- 1.9 DISABLE CACHE ..... 1-18
- 1.10 RESTARTING BI COMPONENTS USING EM SERVER..... 1-19

---

# 1. FLEXCUBE OBIEE Reports Setting

## 1.1 Introduction

This document covers the setting required to launch OBIEE reports from within Flexcube. The various topics covered are:

- Creation of User with Administrator Rights
- Steps to implement access restrictions to user
- Update the User Id in CSTB\_PARAM
- Integration of OBIEE into Flexcube using IFrame
- Writeback XML Deployment
- Server file changes
- Creation and Maintenance of BPEL url.
- Disable Cache
- Restarting BI Components using EM Server

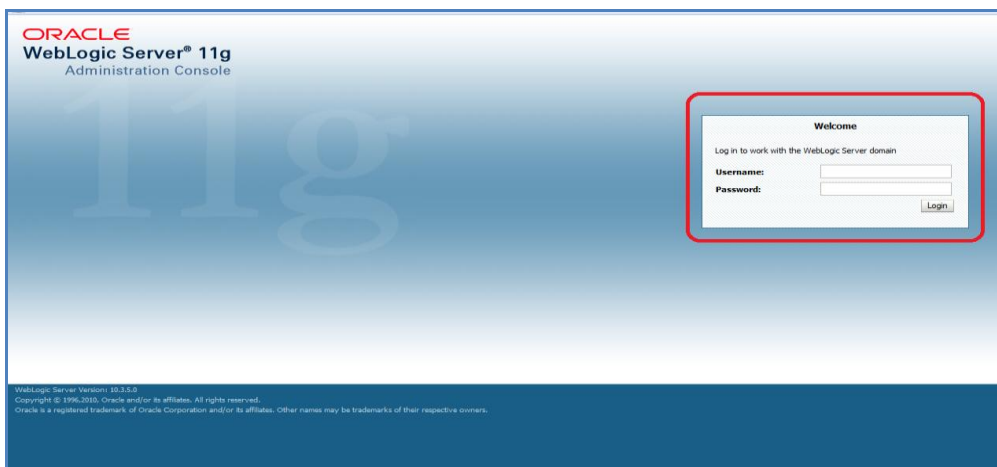
**Note:** If OBIEE is on SSL, valid SSL certificate is essential to invoke OBIEE screens from Oracle FLEXCUBE. If valid SSL certificate is not available, then the browser will show an error message when you try to invoke an OBIEE screen.

## 1.2 Creation of User with Administrator Rights

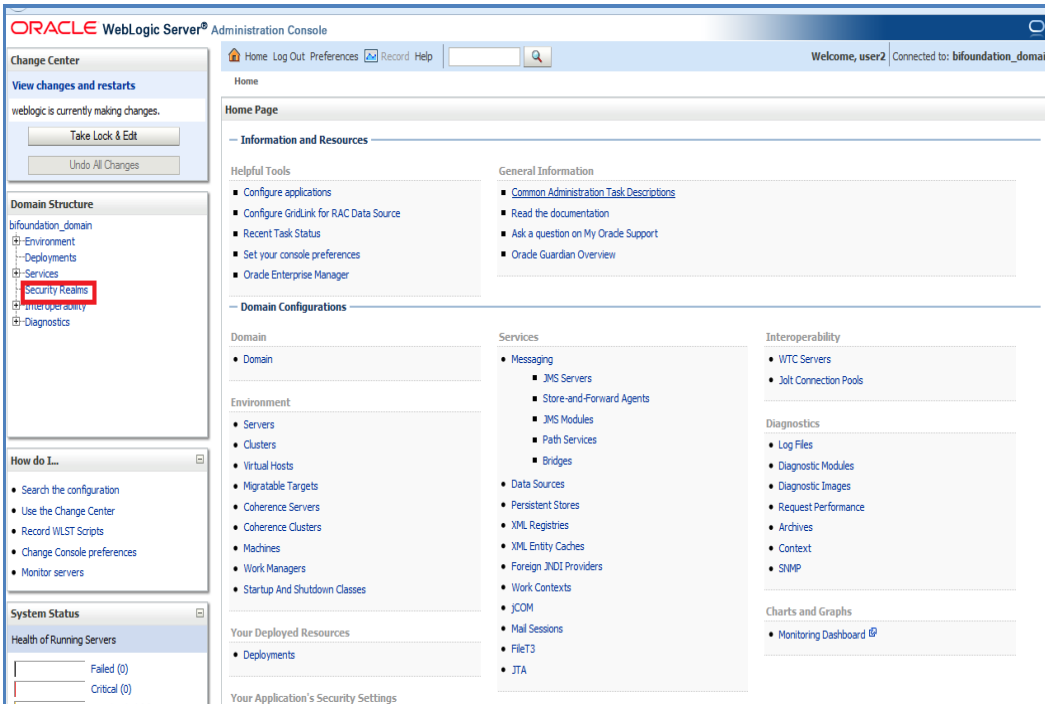
### 1.2.1 Steps to create user

Create 'weblogic' user if it's not created already in the OBIEE instance you are using.

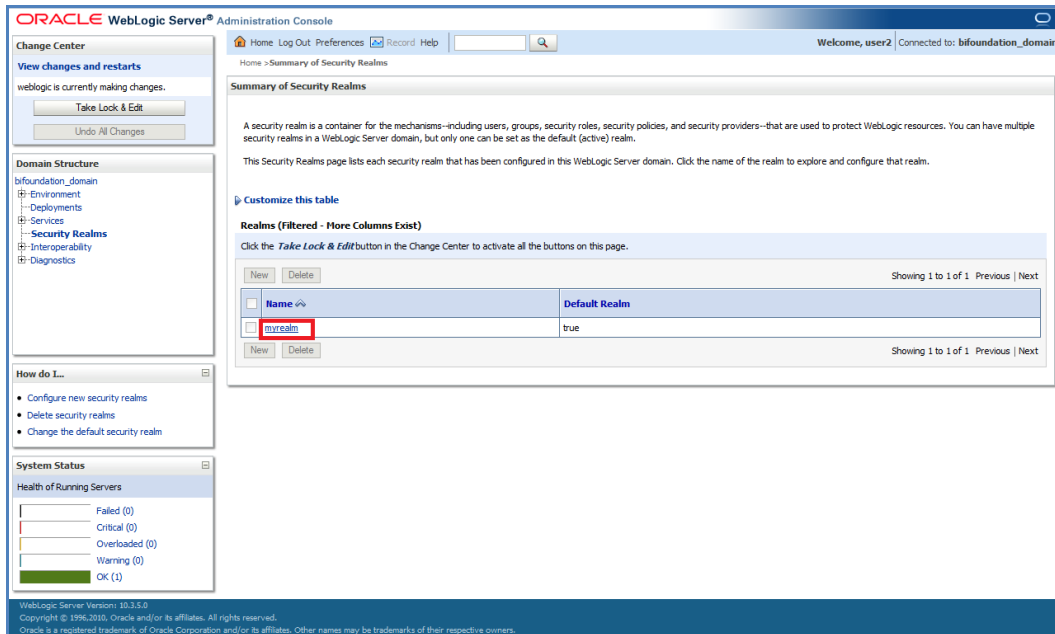
1. Login to OBIEE Admin console with admin credentials



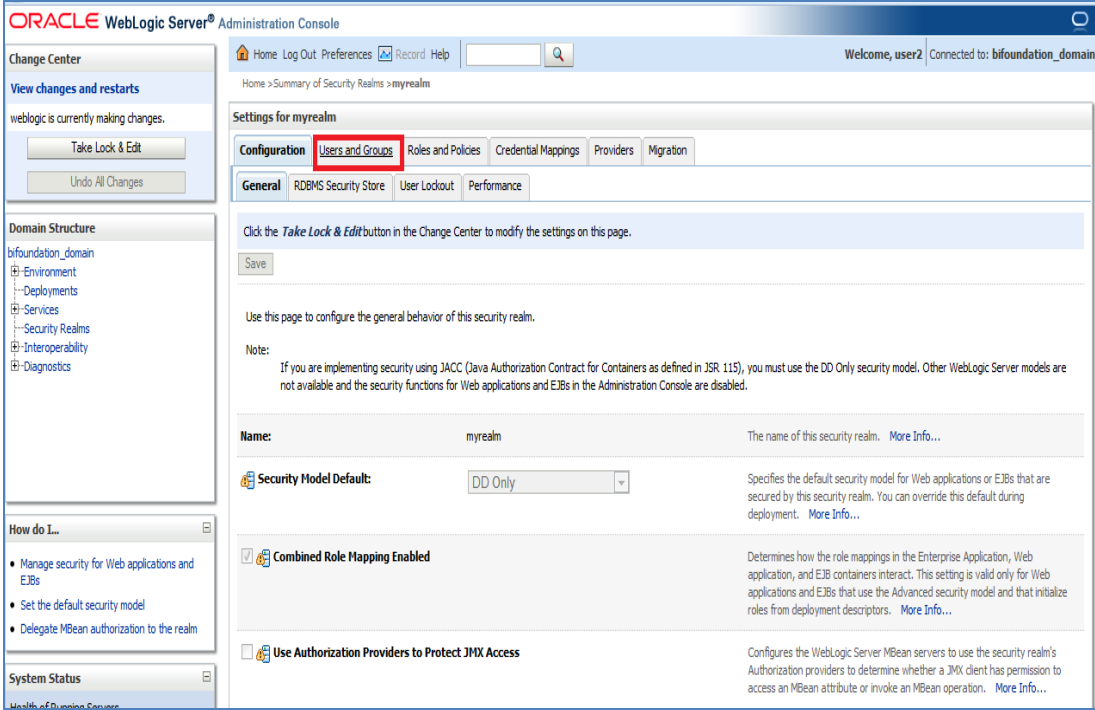
2. Once logged in click on security realms in the page



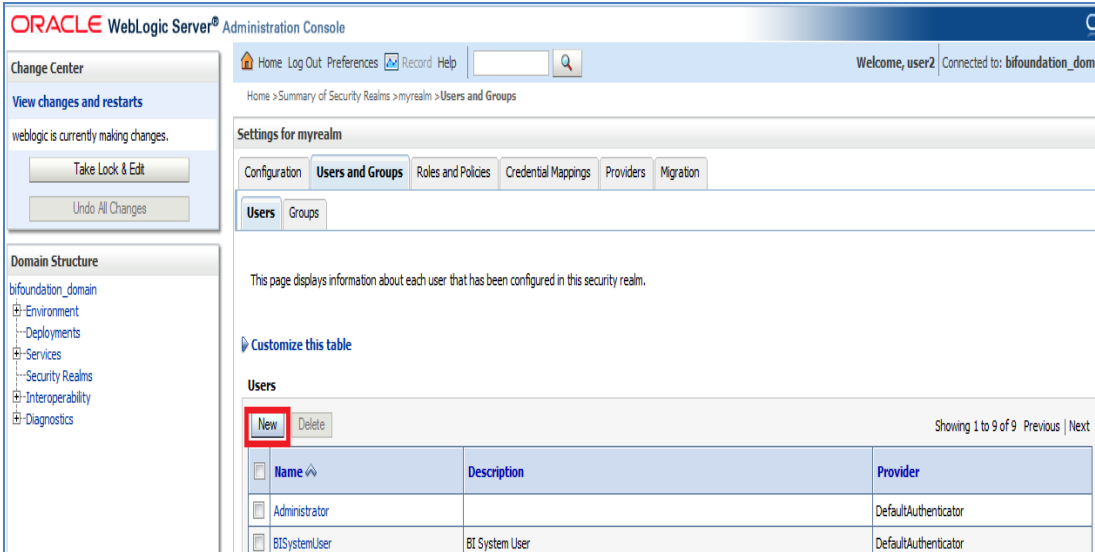
3. Next click on my realms as shown below



4. Next click on user and groups tab



5. Click on New for creating new user



6. Next enter Name as username and password and confirm password and next click on OK

Home > Summary of Security Realms > myrealm > Users and Groups

Welcome, user2 | Connected to: bifoundation\_domain

### Create a New User

OK Cancel

**User Properties**

The following properties will be used to identify your new User.  
\* Indicates required fields

What would you like to name your new User?

\* **Name:**

How would you like to describe the new User?

**Description:**

Please choose a provider for the user.

**Provider:**

The password is associated with the login name for the new User.

\* **Password:**

\* **Confirm Password:**

OK Cancel

7. Once you are done you will be redirected to users window.

8. Click on 'weblogic' user that you created to assign groups to that user

Home > Summary of Security Realms > myrealm > Users and Groups

Welcome, user2 | Connected to: bifoundation\_domain

Messages

✔ User created successfully

### Settings for myrealm

Configuration **Users and Groups** Roles and Policies Credential Mappings Providers Migration

Users Groups

This page displays information about each user that has been configured in this security realm.

Customize this table

**Users**

New Delete

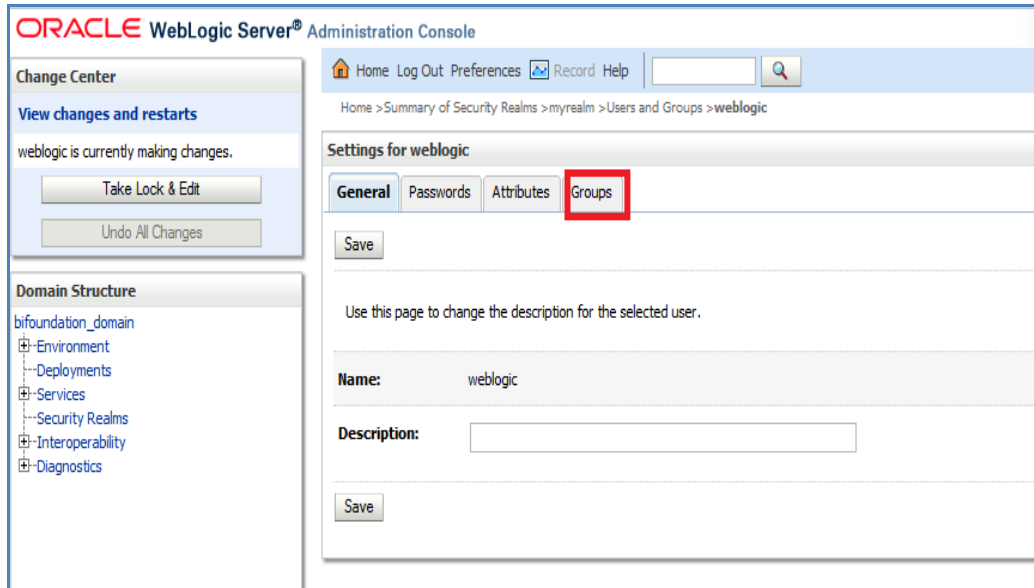
Showing 1 to 10 of 10 Previous | Next

Name	Description	Provider
Administrator		DefaultAuthenticator
BISystemUser	BI System User	DefaultAuthenticator
fcuser		DefaultAuthenticator
fcuser1		DefaultAuthenticator
OracleSystemUser	Oracle application software system user.	DefaultAuthenticator
user1		DefaultAuthenticator
user2		DefaultAuthenticator
user3		DefaultAuthenticator
user4		DefaultAuthenticator
weblogic		DefaultAuthenticator

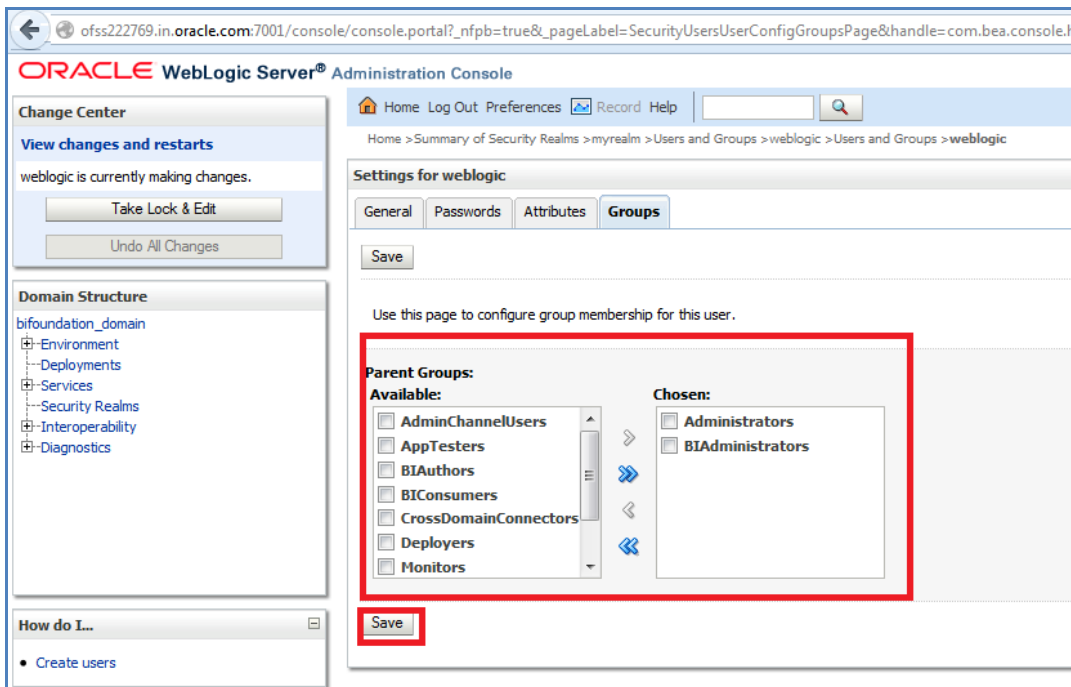
New Delete

Showing 1 to 10 of 10 Previous | Next

9. Next Click on Groups tab



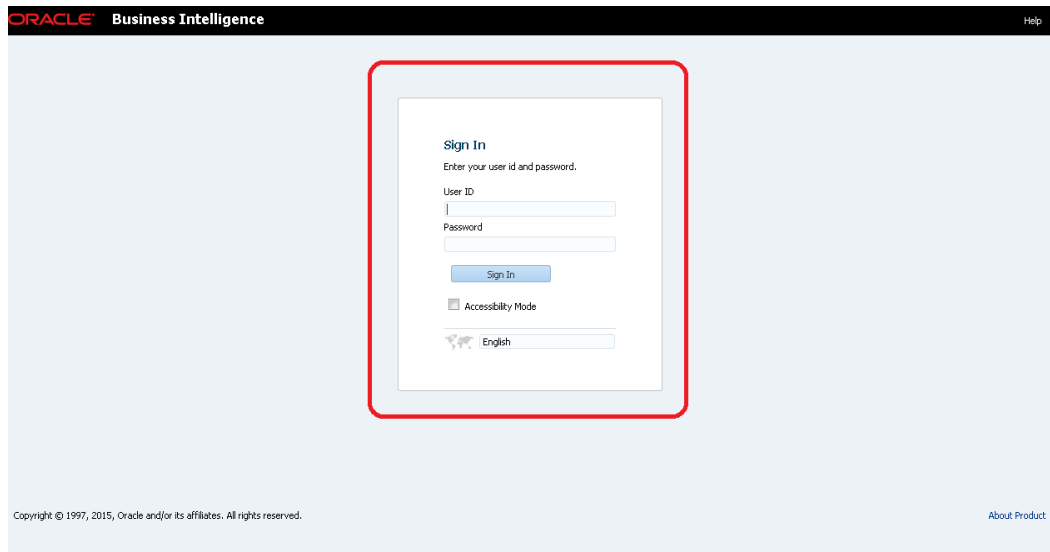
10. Assign the groups 'Administrators' and 'BIAdministrators' groups to **weblogic** user and click Save



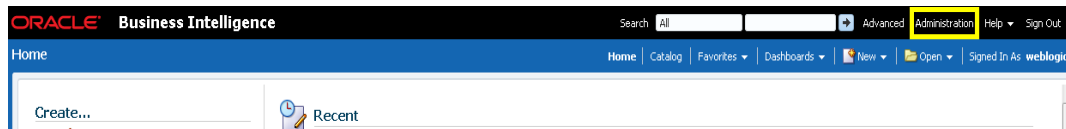
This completes user creation.  
You can logout from here

## 1.3 Steps to implement access restrictions to user

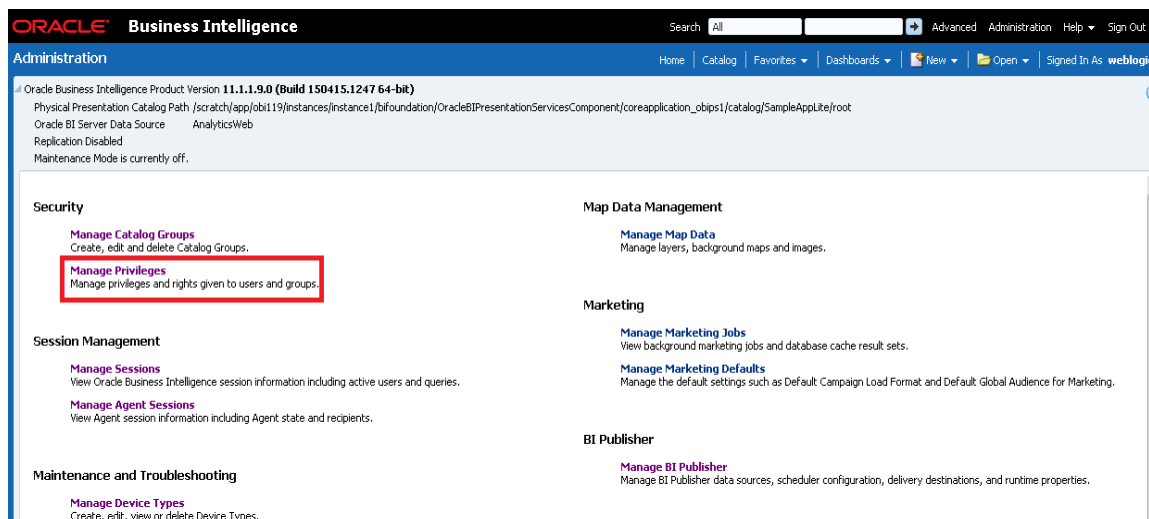
1. Login to OBIEE analytics Url with admin user credentials



2. Once logged in click on Administration link



3. Click on Manage Privileges





4. Click on 'BI Consumer Role' link for 'Catalog Preview UI' access as shown here

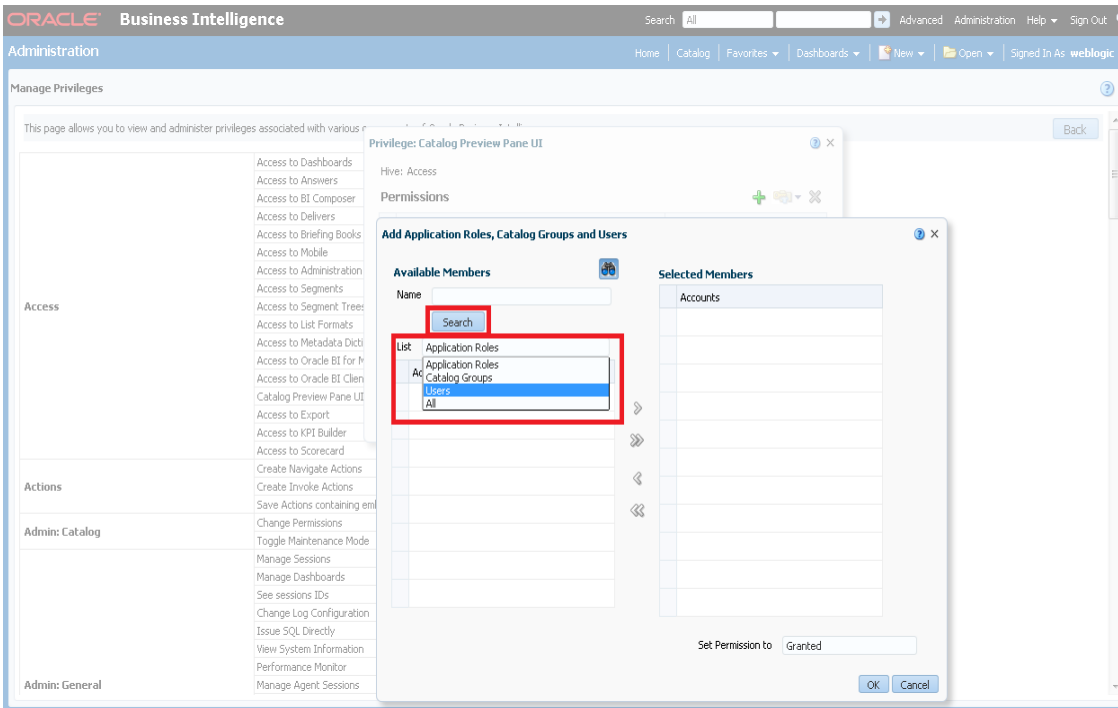
This page allows you to view and administer privileges associated with various components of Oracle Business Intelligence.

Access	Access to Dashboards	<a href="#">BI Consumer Role</a>
	Access to Answers	<a href="#">BI Author Role</a>
	Access to BI Composer	<a href="#">BI Author Role</a>
	Access to Delivers	<a href="#">BI Author Role</a>
	Access to Briefing Books	<a href="#">BI Consumer Role</a>
	Access to Mobile	<a href="#">BI Consumer Role</a>
	Access to Administration	<a href="#">BI Administrator Role</a>
	Access to Segments	<a href="#">BI Consumer Role</a>
	Access to Segment Trees	<a href="#">BI Author Role</a>
	Access to List Formats	<a href="#">BI Author Role</a>
	Access to Metadata Dictionary	<a href="#">BI Author Role</a>
	Access to Oracle BI for Microsoft Office	<a href="#">BI Consumer Role</a>
	Access to Oracle BI Client Installer	<a href="#">BI Consumer Role</a>
	Catalog Preview Pane UI	<a href="#">BI Consumer Role</a>
	Access to Export	<a href="#">BI Consumer Role</a>
Access to KPI Builder	<a href="#">BI Author Role</a>	
Access to Scorecard	<a href="#">BI Consumer Role</a>	

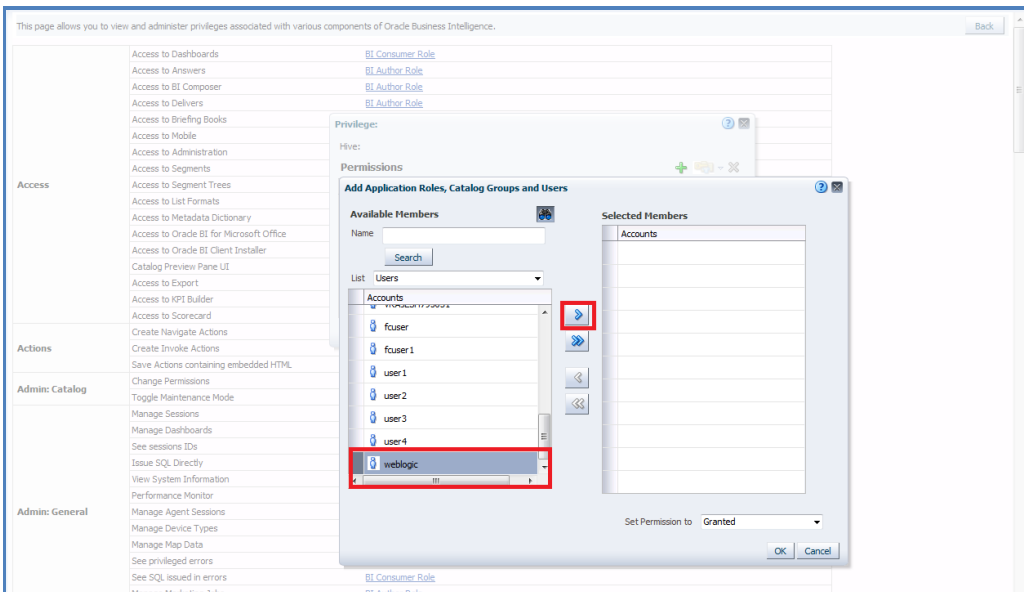
5. Next click on '+' symbol

The screenshot shows the Oracle Business Intelligence Administration console. The 'Manage Privileges' dialog is open for the 'Catalog Preview Pane UI' privilege. The dialog has a 'Hive: Access' section and a 'Permissions' table. The table has two columns: 'Accounts' and 'Permissions'. One row is visible with 'BI Consumer Role' in the 'Accounts' column and 'Granted' in the 'Permissions' column. A red box highlights the '+' icon in the top right corner of the dialog, which is used to add new accounts to the permissions list.

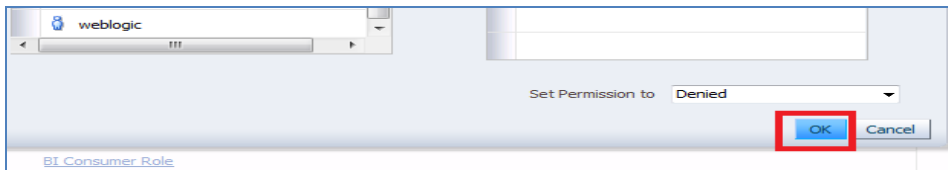
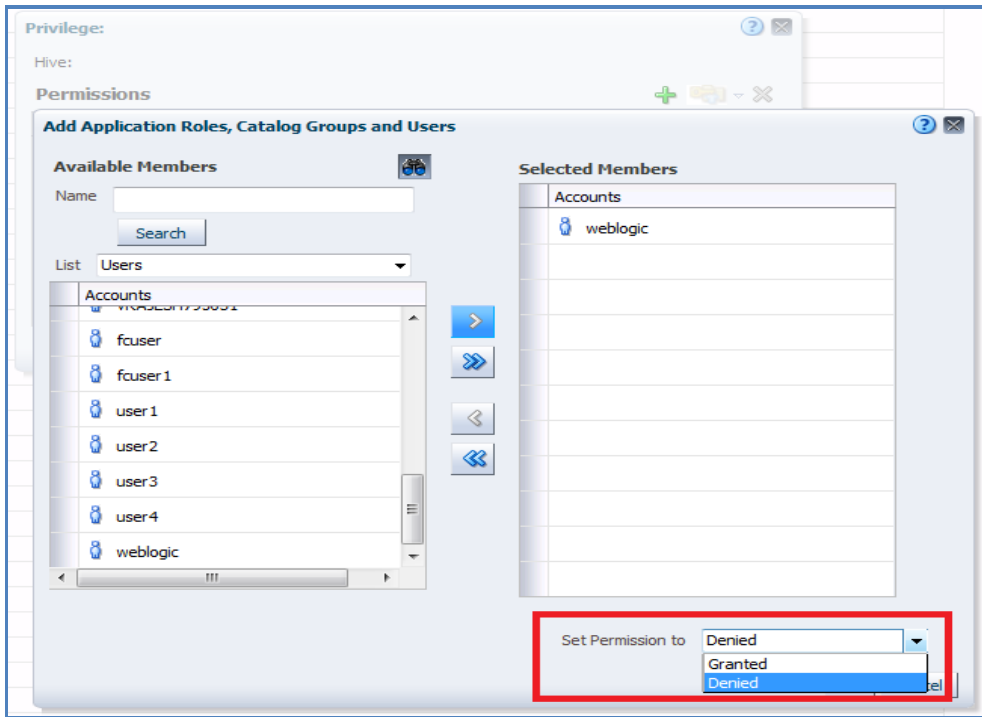
6. Select users from the dropdown shown and click on Search



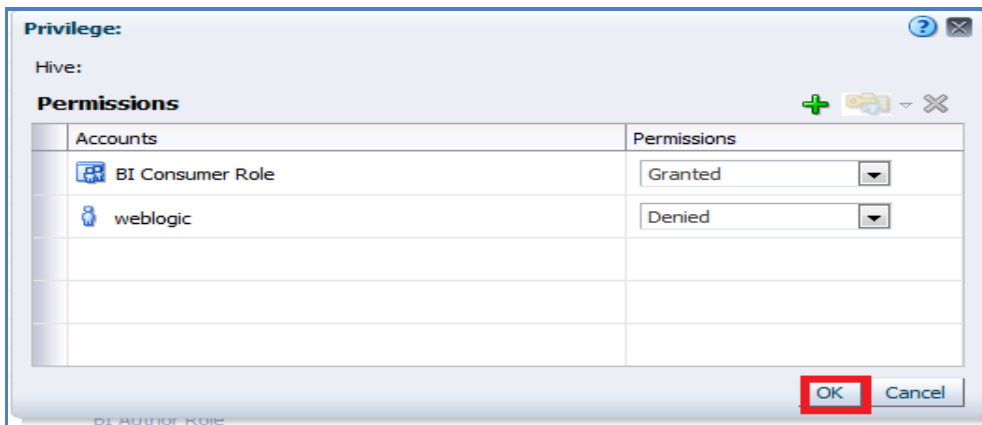
7. Select 'weblogic' user and click on the arrow to move to Selected Members



8. Now set the Permission to Denied and click Ok



9. Again Press Ok



10. Once done you will see that user is denied to the particular access as shown here

This page allows you to view and administer privileges associated with various components of Oracle Business Intelligence.

<b>Access</b>	Access to Dashboards	<a href="#">BI Consumer Role</a>
	Access to Answers	<a href="#">BI Author Role</a>
	Access to BI Composer	<a href="#">BI Author Role</a>
	Access to Delivers	<a href="#">BI Author Role</a>
	Access to Briefing Books	<a href="#">BI Consumer Role</a>
	Access to Mobile	<a href="#">BI Consumer Role</a>
	Access to Administration	<a href="#">BI Administrator Role</a>
	Access to Segments	<a href="#">BI Consumer Role</a>
	Access to Segment Trees	<a href="#">BI Author Role</a>
	Access to List Formats	<a href="#">BI Author Role</a>
	Access to Metadata Dictionary	<a href="#">BI Author Role</a>
	Access to Oracle BI for Microsoft Office	<a href="#">BI Consumer Role</a>
	Access to Oracle BI Client Installer	<a href="#">BI Consumer Role</a>
	Catalog Preview Pane UI	<a href="#">BI Consumer Role</a> <b>Denied: weblogic</b>
	Access to Export	<a href="#">BI Consumer Role</a>
Access to KPI Builder	<a href="#">BI Author Role</a>	
Access to Scorecard	<a href="#">BI Consumer Role</a>	

11. Similarly set user rights for 'weblogic' user for all the below marked access restrictions

Administration Manage Privileges

This page allows you to view and administer privileges associated with various components of Oracle Business Intelligence.

<b>Access</b>	Access to Dashboards	<a href="#">BI Consumer Role</a>
	Access to Answers	<a href="#">BI Author Role</a>
	Access to BI Composer	<a href="#">BI Author Role</a>
	Access to Delivers	<a href="#">BI Author Role</a>
	Access to Briefing Books	<a href="#">BI Consumer Role</a>
	Access to Mobile	<a href="#">BI Consumer Role</a>
	Access to Administration	<a href="#">BI Administrator Role</a> <b>Denied: weblogic</b>
	Access to Segments	<a href="#">BI Consumer Role</a> <b>Denied: weblogic</b>
	Access to Segment Trees	<a href="#">BI Author Role</a>
	Access to List Formats	<a href="#">BI Author Role</a>
	Access to Metadata Dictionary	<a href="#">BI Author Role</a>
	Access to Oracle BI for Microsoft Office	<a href="#">BI Consumer Role</a>
	Access to Oracle BI Client Installer	<a href="#">BI Consumer Role</a> <b>Denied: weblogic</b>
	Catalog Preview Pane UI	<a href="#">BI Consumer Role</a> <b>Denied: weblogic</b>
	Access to Export	<a href="#">BI Consumer Role</a>
Access to KPI Builder	<a href="#">BI Author Role</a>	
Access to Scorecard	<a href="#">BI Consumer Role</a>	

<b>Actions</b>	Create Navigate Actions	<a href="#">BI Consumer Role</a> <b>Denied: weblogic</b>
	Create Invoke Actions	<a href="#">BI Author Role</a>
	Save Actions containing embedded HTML	<a href="#">BI Administrator Role</a>

Administration Manage Privileges

<b>Briefing Book</b>	Add To or Edit a Briefing Book	<a href="#">BI Author Role</a>
	Download Briefing Book	<a href="#">BI Consumer Role</a> <b>Denied: weblogic</b>
	Add to snapshot briefing book	<a href="#">BI Consumer Role</a>
<b>Catalog</b>	Personal Storage (My Folders and My Dashboard)	<a href="#">BI Consumer Role</a> <b>Denied: weblogic</b>
	Reload Metadata	<a href="#">BI Administrator Role</a>
	See Hidden Items	<a href="#">BI Author Role</a>
	Create Folders	<a href="#">BI Author Role</a>
	Archive Catalog	<a href="#">BI Administrator Role</a>
	Unarchive Catalog	<a href="#">BI Administrator Role</a>
	Upload Files	<a href="#">BI Administrator Role</a>
<b>Conditions</b>	Perform Global Search	<a href="#">BI Author Role</a>
	Perform Extended Search	<a href="#">BI Author Role</a>
<b>Dashboards</b>	Create Conditions	<a href="#">BI Author Role</a>
	Save Customizations	<a href="#">BI Consumer Role</a> <b>Denied: weblogic</b>
	Assign Default Customizations	<a href="#">BI Author Role</a> <b>Denied: weblogic</b>
	Create Bookmark Links	<a href="#">BI Consumer Role</a> <b>Denied: weblogic</b>
	Create Prompted Links	<a href="#">BI Consumer Role</a> <b>Denied: weblogic</b>
	Export Entire Dashboard To Excel	<a href="#">BI Consumer Role</a>
Export Single Dashboard Page To Excel	<a href="#">BI Consumer Role</a>	

Administration		
	Home	Catalog
	Favorites	Dashboards
<b>Manage Privileges</b>		
<b>Home and Header</b>	Access Home Page	BI Consumer Role <del>Denied: weblogic</del>
	Access Catalog UI	BI Consumer Role <del>Denied: weblogic</del>
	Access Catalog Search UI	BI Consumer Role <del>Denied: weblogic</del>
	Simple Search Field	BI Consumer Role
	Advanced Search Link	BI Consumer Role <del>Denied: weblogic</del>
	Open Menu	BI Consumer Role <del>Denied: weblogic</del>
	New Menu	BI Consumer Role <del>Denied: weblogic</del>
	Help Menu	BI Consumer Role <del>Denied: weblogic</del>
	Dashboards Menu	BI Consumer Role <del>Denied: weblogic</del>
	Favorites Menu	BI Consumer Role
	My Account Link	BI Consumer Role <del>Denied: weblogic</del>
	Custom Links	BI Consumer Role <del>Denied: weblogic</del>
	<b>My Account</b>	Access to My Account
Change Preferences		BI Consumer Role
Change Delivery Options		BI Consumer Role

12. To give access follow the same steps as above but select Granted in the Step: 8.
13. Similarly set user rights for 'weblogic' user for all the below marked Privileges

Administration		
	Home	Catalog
	Favorites	Dashboards
<b>Manage Privileges</b>		
<b>View Ticker</b>	Add/Edit TickerView	BI Author Role
<b>View Title</b>	Add/Edit TitleView	BI Author Role
<b>View Treemap</b>	Add/Edit TreemapView	BI Author Role
<b>View Trellis</b>	Add/Edit TrellisView	BI Author Role
<b>View View Selector</b>	Add/Edit View SelectorView	BI Author Role
<b>Write Back</b>	Write Back to Database	weblogic <del>Denied: Authenticated User</del>
	Manage Write Back	BI Administrator Role weblogic

Administration		Home
<b>Manage Privileges</b>		
	Delivers	BI Administrator Role
	Execute Direct Database Analysis	BI Administrator Role <b>weblogic</b>
	Create Agents	BI Author Role
	Publish Agents for Subscription	BI Author Role
	Deliver Agents to Specific or Dynamically Determined Users	BI Administrator Role
	Chain Agents	BI Author Role
	Modify Current Subscriptions for Agents	BI Administrator Role
	Proxy	Denied: Authenticated User
	RSS Feeds	BI Consumer Role
	Create/Edit Scorecards	BI Author Role
	View Scorecards	BI Consumer Role
	Create/Edit Objectives	BI Author Role
	Create/Edit Initiatives	BI Author Role
	Create Views	BI Author Role
	Create/Edit Causes And Effects Linkages	BI Author Role
	Create/Edit Perspectives	BI Author Role
	Add Annotations	BI Consumer Role
	Override Status	BI Consumer Role
	Create/Edit KPIs	BI Author Role
	Write Back to Database for KPI	BI Consumer Role <b>weblogic</b>
	Add Scorecard Views To Dashboards	BI Consumer Role
	Scorecard	

This way we can create user and give specific grants and also deny the access to the OBIEE options.

## 1.4 Update the User Id in CSTB\_PARAM

In CSTB\_PARAM , Update the name of the user in PARAM\_VAL for PARAM\_NAME "OBIEE\_USER"

Eg: weblogic

## 1.5 Integration of OBIEE into Flexcube using IFrame

1. Locate the instanceconfig.xml file at the below location:

[OBIEE\_HOME]\instances\instance1\config\OracleBIPresentationServicesComponent\coreapplication\_obips1\

Update the instanceconfig.xml file to add the highlighted entry within the "security" tag

```
<Security>
<!--Changes to Integration of OBIEE to Flexcube Starts-->
<InIFrameRenderingMode>allow</InIFrameRenderingMode>
<!--Changes to Integration of OBIEE to Flexcube Ends-->
<!--This Configuration setting is managed by Oracle Enterprise Manager Fusion Middleware Control-->
<ClientSessionExpireMinutes>210</ClientSessionExpireMinutes>
</Security>
```

2. Edit the 'web.xml' file at the following location:

[OBIEE\_HOME]\oracleBI1\bifoundation\web\app\WEB-INF\

Add the highlighted text into the “web.xml”

```
<servlet-mapping>
    <servlet-name>SAWBridge</servlet-name>
    <url-pattern>/saw.dll/*</url-pattern>
</servlet-mapping>

<servlet-mapping>
    <servlet-name>RelatedContent</servlet-name>
    <url-pattern>/RelatedContent</url-pattern>
</servlet-mapping>

<context-param>
    <param-name>oracle.adf.view.rich.security.FRAME_BUSTING</param-name>
    <param-value>never</param-value>
</context-param>

<login-config>
    <auth-method>CLIENT-CERT</auth-method>
</login-config>
```

3. Now restart all the Bi components using EM Server.

## 1.6 Writeback XML Deployment

1. Take the Two writeback XMLs
  - (i) ICDSKTOP\_COLL.xml
  - (ii) ICDSKTOP\_LIAB.xml

They are available in SVN path :

[http://ofssfcdevsvn.in.oracle.com:18080/svn/FLEXCUBE\\_ELCM/branches/FCELCM\\_12.0.1.0.0/Soft/MAIN/EL/OBIEE\\_11g/WritebackXML](http://ofssfcdevsvn.in.oracle.com:18080/svn/FLEXCUBE_ELCM/branches/FCELCM_12.0.1.0.0/Soft/MAIN/EL/OBIEE_11g/WritebackXML)

2. The XML's should be placed in OBIEE server in the paths mentioned below:

[OBIEE\_HOME]/instances/instance1/bifoundation/OracleBIPresentationServicesComponent/coreapplication\_obips1/analyticsRes/customMessages

[OBIEE\_HOME]/Oracle\_BI1/bifoundation/web/msgdb/customMessages

Please create the customMessages folder as by default they will not be there.

3. Now restart the BI Components from EM Server.

## 1.7 Server file changes

1. Go to the the path mentioned below  
[OBIEE\_HOME]/instances/instance1/config/OracleBIServerComponent/coreapplication\_obis1
2. Open NQSConfig file and make the EVALUATE\_SUPPORT\_LEVEL = 2

```
# EVALUATE_SUPPORT_LEVEL:
# 1: evaluate is supported for users with manageRepositorie
# 2: evaluate is supported for any user.
# other: evaluate is not supported if the value is anything
EVALUATE_SUPPORT_LEVEL = 2;
FMW_SECURITY_SERVICE_URL = "http://10.184.149.60:9704"; #
FMW_SECURITY_SERVICE_MAX_NUMBER_OF_CONNECTIONS = 2000;
FMW_SECURITY_SERVICE_MAX_NUMBER_OF_RETRIES = 0;
# FMW_SECURITY_SERVICE_RETRY_EXCEPTION_SUBSTRING = "forcibl
FMW_UPDATE_ROLE_AND_USER_REF_GUIDS = NO;
```

3. Go to the path mentioned below  
[OBIEE\_HOME]/instances/instance1/config/OracleBIPresentationServicesComponent/coreapplication\_obips1
4. Open instanceconfig file and add the following line after </BIComposer>

<LightWriteback>true</LightWriteback>

For Example:

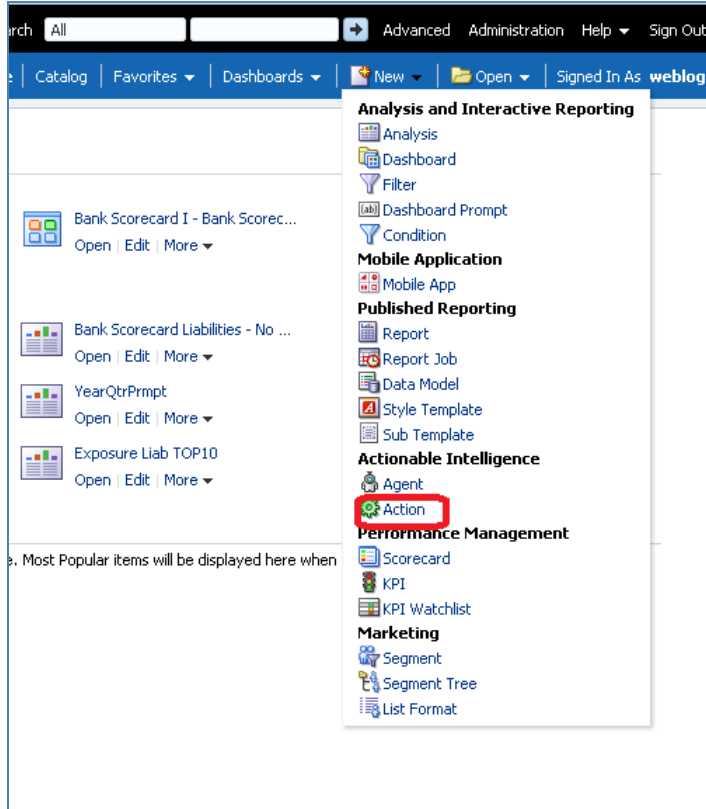
```
<BIComposer>
<!--This Configuration setting is managed by Oracle Enterprise Ma
<Enabled>true</Enabled>
</BIComposer>
<LightWriteback>true</LightWriteback>
<DeploymentProfile>
<!--This Configuration setting is managed by Oracle Enterprise Ma
<DeploymentMode>onsite</DeploymentMode>
</DeploymentProfile>
<AsyncLogon>
```



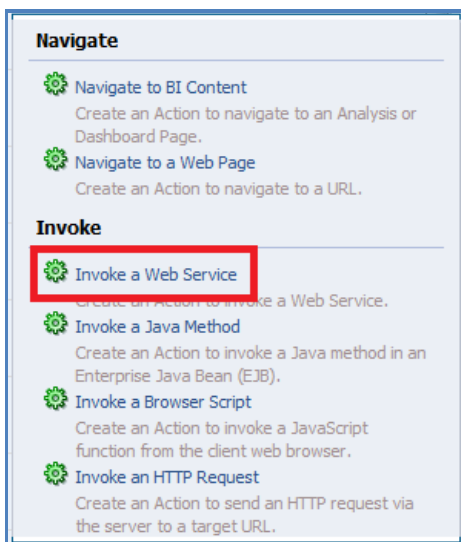
## 1.8 Creation and Maintenance of BPEL url.

### 1.8.1 Steps for creation of BPEL url.

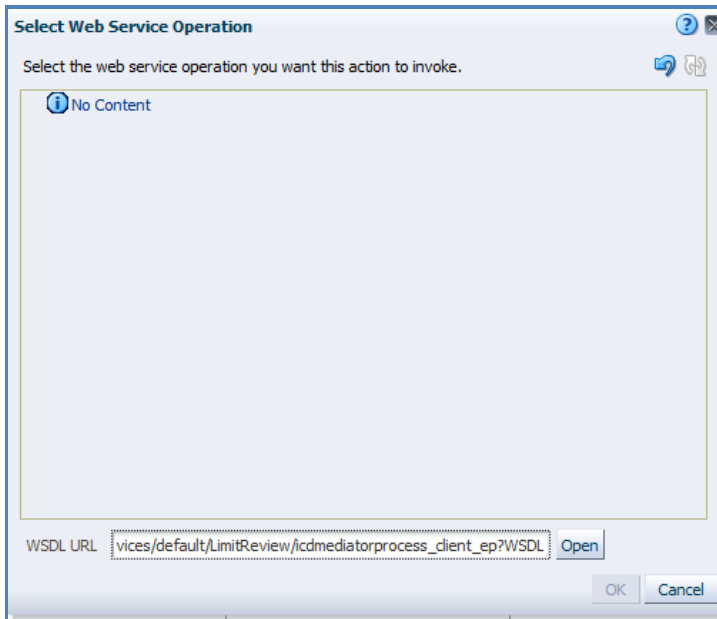
1.To create a BPEL task select the Action from New.



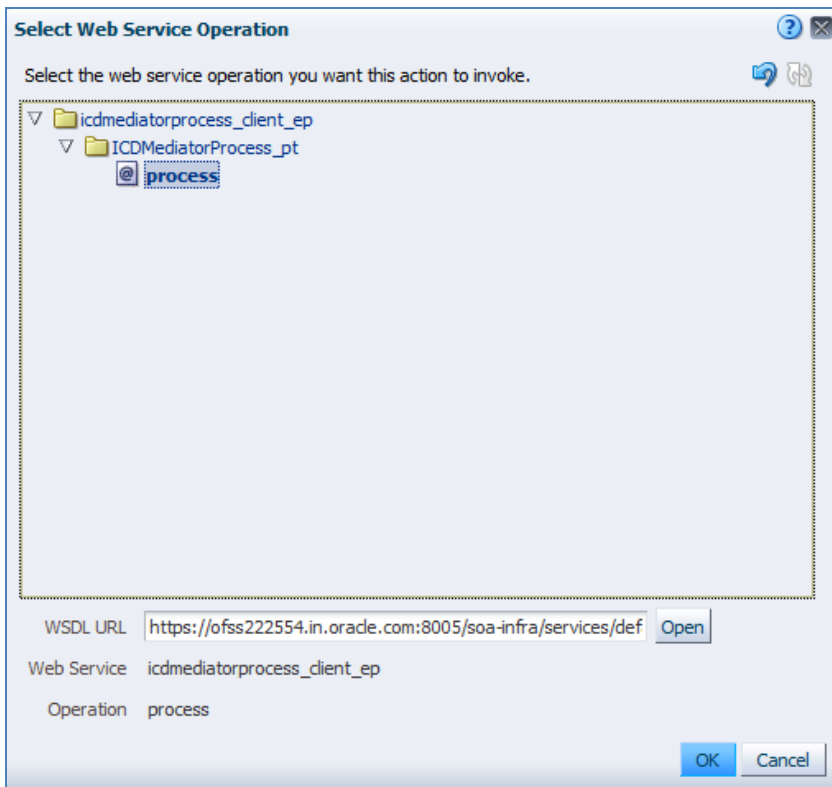
2.Select 'Invoke a Web Service'.



3. Now Enter the WSDL URL and click Open



4. Navigate to the process and select Ok button



5. Now the screen shows as follows.

Only the Alert Desc will be displayed to the user, so Change the name of that prompt and 'Save Action'.

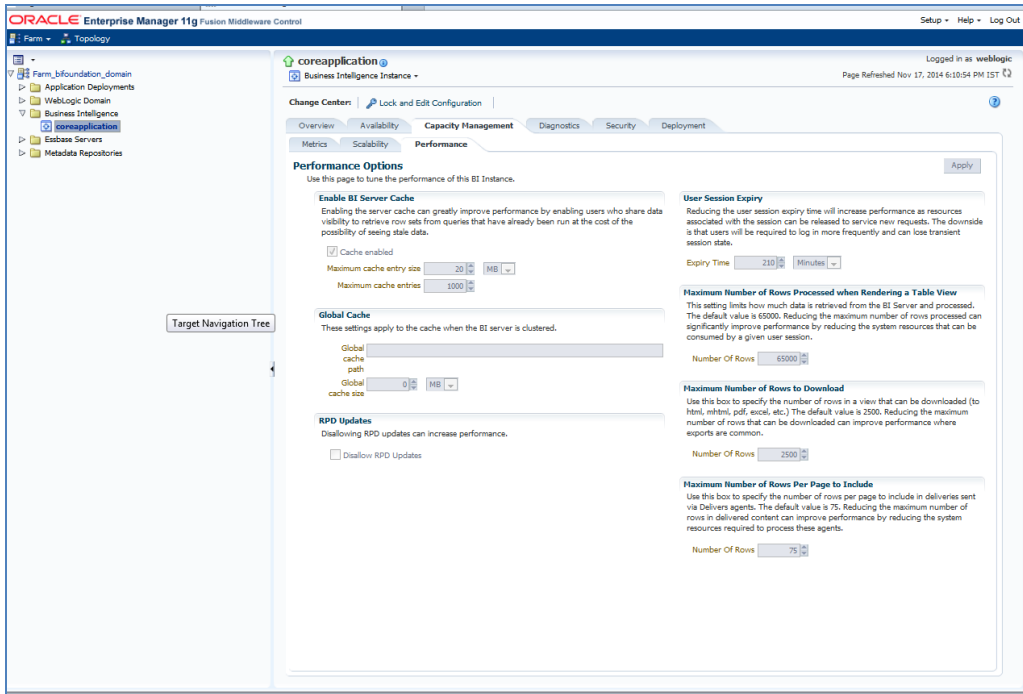
Name	Prompt	Value	Fixed	Hidden	Optional
LimitReviewInput_CUSTOMER---NAME	CUSTOMER---NAME	[23] Value	<input type="checkbox"/>	<input type="checkbox"/>	<input type="checkbox"/>
LimitReviewInput_REVIEW---DATE	REVIEW---DATE	[23] Value	<input type="checkbox"/>	<input type="checkbox"/>	<input type="checkbox"/>
LimitReviewInput_USERID	USERID	[23] Value	<input type="checkbox"/>	<input type="checkbox"/>	<input type="checkbox"/>
LimitReviewInput_ALERT---CODE	ALERT---CODE	[23] Value	<input type="checkbox"/>	<input type="checkbox"/>	<input type="checkbox"/>
LimitReviewInput_ALERT---DESC	ALERT---DESC	[23] Value	<input type="checkbox"/>	<input type="checkbox"/>	<input type="checkbox"/>

### 1.8.2 Steps for Maintenance of BPEL url.

1. Open the already existing action from the catalog.
2. You will be prompted the screen that is present in step: 5.
3. Now click Browse and follow the steps from Step: 3 until end.

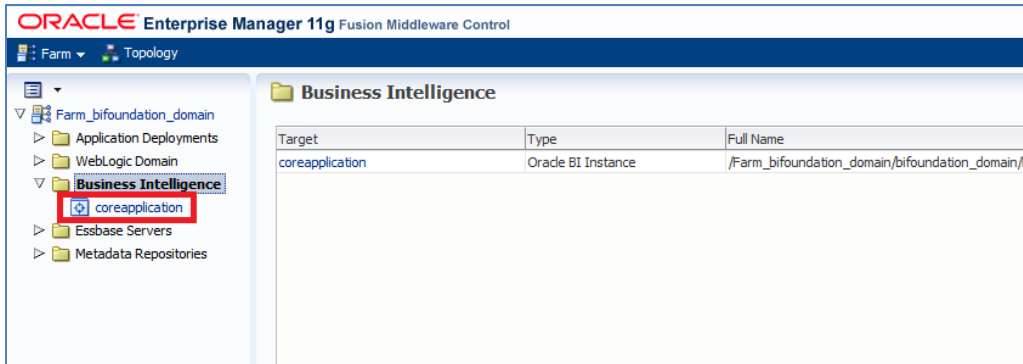
## 1.9 Disable Cache

1. Login to Enterprise manager,
2. Go to Farm\_bifoundation\_domain → Business Intelligence → coreapplication on the left side.
3. Click on it and select Performance Tab.
4. Under Enable BI Server Cache , Cache Enabled should be unchecked.

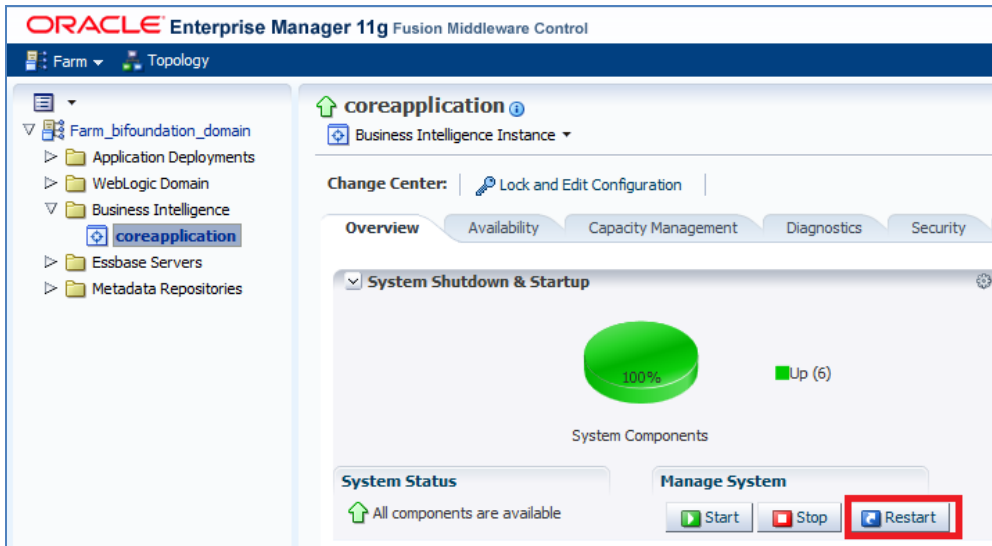


## 1.10 Restarting BI Components using EM Server

1. Login Into EM server of OBIEE
2. Go to coreapplicaitons in Business Intelligence option



3. The below screen opens.



4. Click 'Restart'.
5. Click 'Yes'.



Flexcube OBIEE Reports  
[May] [2016]  
Version 12.2.0.0.0

Oracle Financial Services Software Limited  
Oracle Park  
Off Western Express Highway  
Goregaon (East)  
Mumbai, Maharashtra 400 063  
India

Worldwide Inquiries:  
Phone: +91 22 6718 3000  
Fax: +91 22 6718 3001  
[www.oracle.com/financialservices/](http://www.oracle.com/financialservices/)

Copyright © [2007], [2016], Oracle and/or its affiliates. All rights reserved.

Oracle and Java are registered trademarks of Oracle and/or its affiliates. Other names may be trademarks of their respective owners.

**U.S. GOVERNMENT END USERS:** Oracle programs, including any operating system, integrated software, any programs installed on the hardware, and/or documentation, delivered to U.S. Government end users are "commercial computer software" pursuant to the applicable Federal Acquisition Regulation and agency-specific supplemental regulations. As such, use, duplication, disclosure, modification, and adaptation of the programs, including any operating system, integrated software, any programs installed on the hardware, and/or documentation, shall be subject to license terms and license restrictions applicable to the programs. No other rights are granted to the U.S. Government.

This software or hardware is developed for general use in a variety of information management applications. It is not developed or intended for use in any inherently dangerous applications, including applications that may create a risk of personal injury. If you use this software or hardware in dangerous applications, then you shall be responsible to take all appropriate failsafe, backup, redundancy, and other measures to ensure its safe use. Oracle Corporation and its affiliates disclaim any liability for any damages caused by use of this software or hardware in dangerous applications.

This software and related documentation are provided under a license agreement containing restrictions on use and disclosure and are protected by intellectual property laws. Except as expressly permitted in your license agreement or allowed by law, you may not use, copy, reproduce, translate, broadcast, modify, license, transmit, distribute, exhibit, perform, publish or display any part, in any form, or by any means. Reverse engineering, disassembly, or decompilation of this software, unless required by law for interoperability, is prohibited.

The information contained herein is subject to change without notice and is not warranted to be error-free. If you find any errors, please report them to us in writing.

This software or hardware and documentation may provide access to or information on content, products and services from third parties. Oracle Corporation and its affiliates are not responsible for and expressly disclaim all warranties of any kind with respect to third-party content, products, and services. Oracle Corporation and its affiliates will not be responsible for any loss, costs, or damages incurred due to your access to or use of third-party content, products, or services.